



Haselmere Close , Bury St. Edmunds, IP32 7JQ

Isaac Estates are pleased to market this modern one bedroom terraced house situated on the Popular Bartons Development, located within easy reach of the town centre to Bury St Edmunds.

The property is set over two floors and offers refitted kitchen with electric oven and hob included, sitting room / dining room. The first floor offers one double bedroom with fitted wardrobes and a refitted bathroom.

Externally there is a pleasant enclosed rear garden and allocated parking.

Viewing highly recommended. Video Tour available upon request

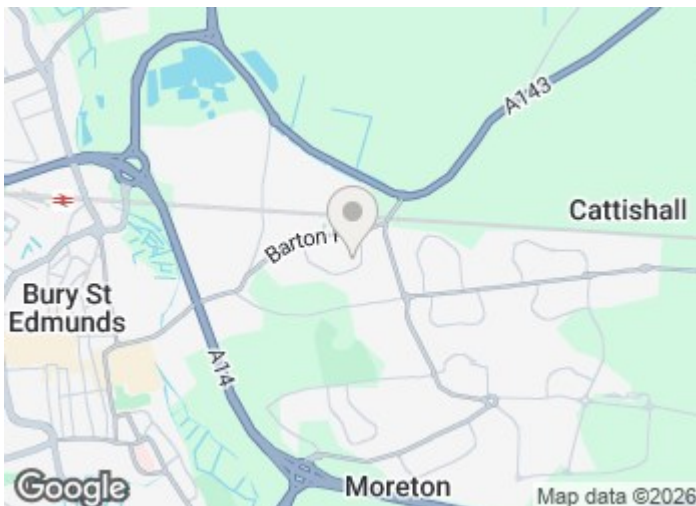
£950 Per month

Haselmere Close

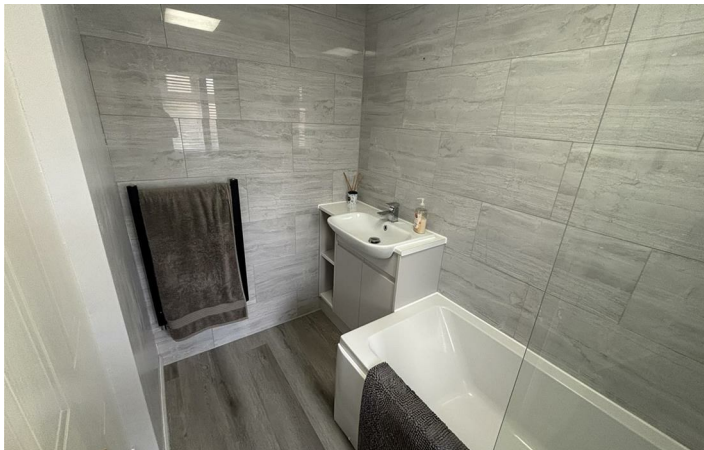
, Bury St. Edmunds, IP32 7JQ



- MODERN ONE BEDROOM TERRACED HOUSE
- BEDROOM WITH FITTED WARDROBES
- EPC 62D, COUNCIL TAX BAND A
- MINIMUM TERM CONTRACT TWELVE MONTHS, VIDEO TOUR AVAILABLE
- REFITTED KITCHEN WITH ELECTRIC OVEN AND HOB
- REFITTED BATHROOM, UPDATED ELECTRIC HEATING
- SITUATED ON THE POPULAR BARTONS DEVELOPMENT
- SITTING ROOM / DINING ROOM
- ENCLOSED REAR GARDEN, ALLOCATED PARKING
- VIEWING HIGHLY RECOMMENDED



[Directions](#)





Floor Plan

These particulars, whilst believed to be accurate are set out as a general outline only for guidance and do not constitute any part of an offer or contract. Intending purchasers should not rely on them as statements of representation of fact, but must satisfy themselves by inspection or otherwise as to their accuracy. No person in this firm's employment has the authority to make or give any representation or warranty in respect of the property.

12 Langton Place, Hatter Street, Bury St Edmunds, Suffolk, IP33 1NE
Tel: 01284 620011 Email: ryan@isaacestates.co.uk www.isaacestates.co.uk

